



£425,000

4 Bedroom Detached House for sale

2 The Grove Blythe Bridge, Blythe Bridge, Stoke-on-Trent





Overview

An Exceptional 4-Bedroom Detached Family Home | Extended, Remodelled & Finished to Perfection



Key Features

- South Facing Garden
- Spacious Family Home
- Extended and Remodelled
- Cul-de-Sac Position
- Well-established and Sought-after Location
- Close to Excellent Local Amenities and Commuter Links
- Ample Off-Road Parking for Several Vehicles
- Landscaped Gardens Front and Rear





This family home has been owned by 3 generations of the same family since new and is now looking for an equally as passionate family to take her forward.

Welcome to this stunningly reimagined four-bedroom family residence, perfectly positioned within a highly sought-after and well-established residential pocket of Blythe Bridge. Seamlessly blending contemporary design with generous proportions, this property has been thoughtfully extended and remodelled by the current owners to create the ultimate environment for both modern family life and large-scale entertaining in the South facing garden.

From the moment you step into the bright and welcoming Entrance Hall, complete with beautiful herringbone-style Karndean flooring and a sweeping staircase, you'll sense the quality on offer. Practicality is covered too here with a guest WC and understairs storage cupboard ensure the busy mechanics of life are kept neatly out of site.

The Ultimate Kitchen/Diner: Spanning an impressive 20' x 20', this remodelled open-plan space is a showstopper. Featuring a chic central island with a breakfast bar, sleek high-gloss cabinetry, integrated appliances, and a dedicated dining area, it's a social hub designed for family gatherings. Dual-aspect windows and double doors out to the garden flood the room with natural light.

The generous lounge features an elegant stone fire surround and mantel with log-burner and provides a cozy yet spacious retreat. Sliding patio doors open directly into a beautiful Conservatory, effortlessly bridging the gap between indoor luxury and outdoor relaxation.

On the first floor is sanctuary and comfort. A bright, open landing leading to four beautifully proportioned bedrooms and a boutique-style family bathroom. The landing has a feature picture window, perfectly framing the old Oak tree in the front garden.

A vast, premium master bedroom boasting plenty of space for substantial freestanding or fitted wardrobes. Such is the space on offer here, the more discerning buyer will see an opportunity install an ensuite shower room with relative ease adding yet more appeal to the home. Bedrooms Two, Three & Four: Three further versatile, light-filled bedrooms offer the perfect setup for a growing family, guest rooms, or a dedicated home office.

The Family Bathroom: A luxurious, ultra-modern four-piece suite. It features a



striking freestanding curved bath, a separate walk-in shower cubicle, a feature vanity sink unit, and sleek tiling.

Step Outside

- **The Frontage:** The property commands excellent kerb appeal with a remarkably wide, sweeping tarmac driveway providing extensive off-road parking for multiple vehicles. A mature, beautifully manicured lawn and an established tree offer a lovely sense of privacy from the road.
- **The Rear Garden:** Step out into a beautifully landscaped, sunny rear garden thanks to the South facing aspect. A neat, flat lawn is bordered by a paved patio area-perfect for an outdoor sofa set, barbecues, and alfresco dining. French doors from both the kitchen and the conservatory make this a flawless setup for summer entertaining. If you're looking for shelter from the summer sun then the adjacent garden room is the perfect haven or simply a quiet retreat from the bustle of family life.

Location, Location, Location

Situated in the highly desirable area of Blythe Bridge, this home benefits from the peace of a well-established neighbourhood while remaining incredibly well-connected. Highly regarded local schooling, local amenities, and the village railway station are all within easy reach, while the A50 corridor offers seamless commuting to Stoke-on-Trent, Uttoxeter, and Derby.

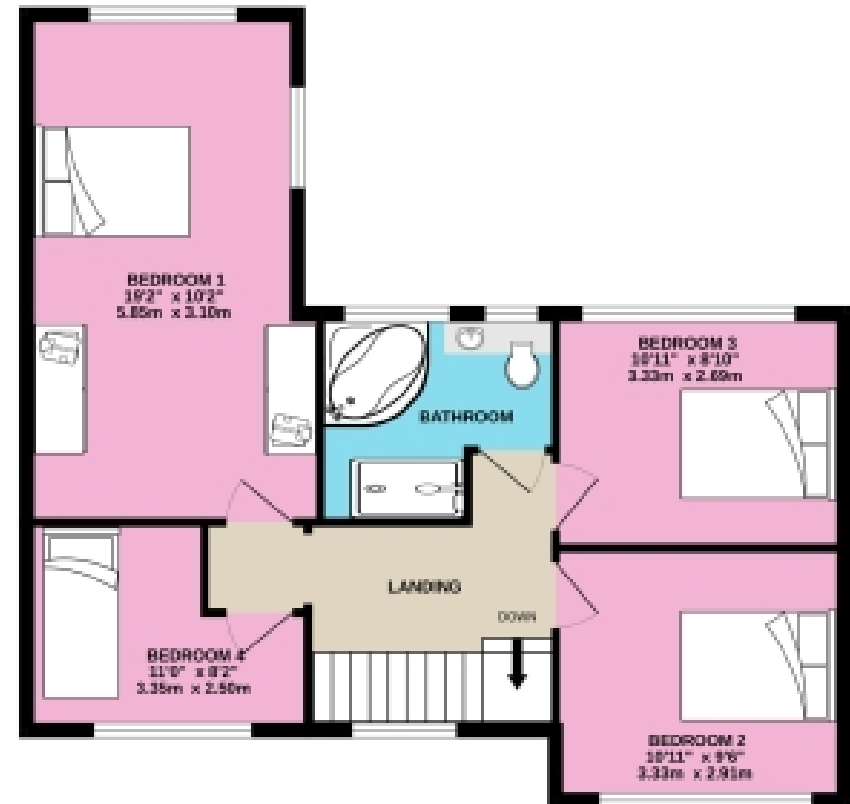
Properties of this calibre, size, and finish in this specific location are rare to the market. Early viewing is highly recommended to appreciate the sheer scale and quality of accommodation on offer.

Floorplans

GROUND FLOOR
734 sq.ft. (68.1 sq.m.) approx.



1ST FLOOR
632 sq.ft. (58.7 sq.m.) approx.



TOTAL FLOOR AREA : 1366 sq.ft. (126.8 sq.m.) approx.

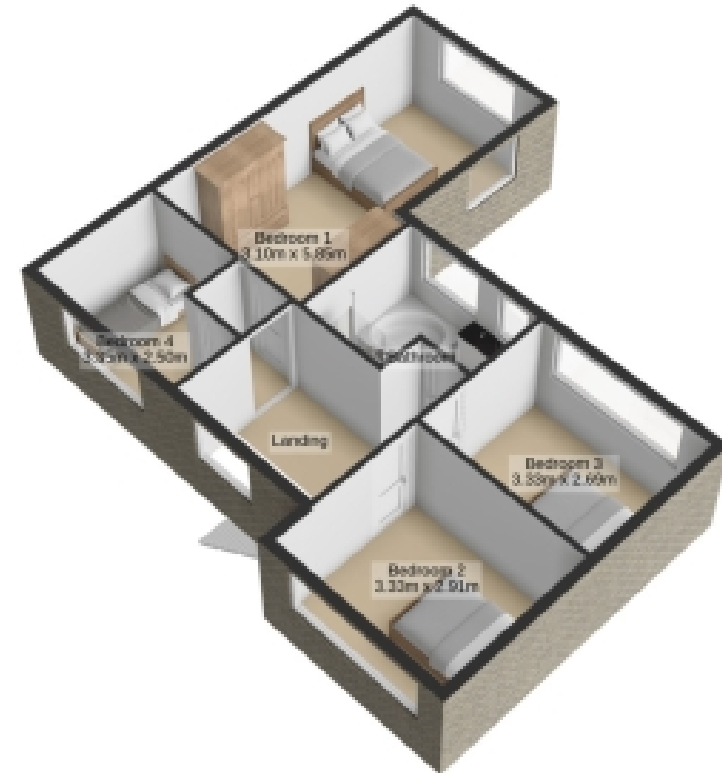
Whilst every attempt has been made to ensure the accuracy of the floorplan contained here, measurements of doors, windows, rooms and any other items are approximate and no responsibility is taken for any error, omission or mis-statement. This plan is for illustrative purposes only and should be used as such by any prospective purchaser. The services, systems and appliances shown have not been tested and no guarantee as to their operability or efficiency can be given.
Made with Metropix ©2026

Floorplans

Ground Floor
734 sq.ft. (68.1 sq.m.) approx.



1st Floor
632 sq.ft. (58.7 sq.m.) approx.



Total Floor Area : 1365 sq.ft. (126.8 sq.m.) approx.

For illustrative purposes only. Decorative finishes, fixtures, fittings and furnishings do not represent the current state of the property. Measurements are approximate. Not to scale.

Made with Metropix © 2026

EPC

The EPC will be available within 28 days or the property may be exempt, please speak to us for more details.



Marketed by EweMove Uttoxeter & Cheadle

01889 221348 (24/7)
uttoxeter@ewemove.com



EweMove
SALES AND LETTINGS